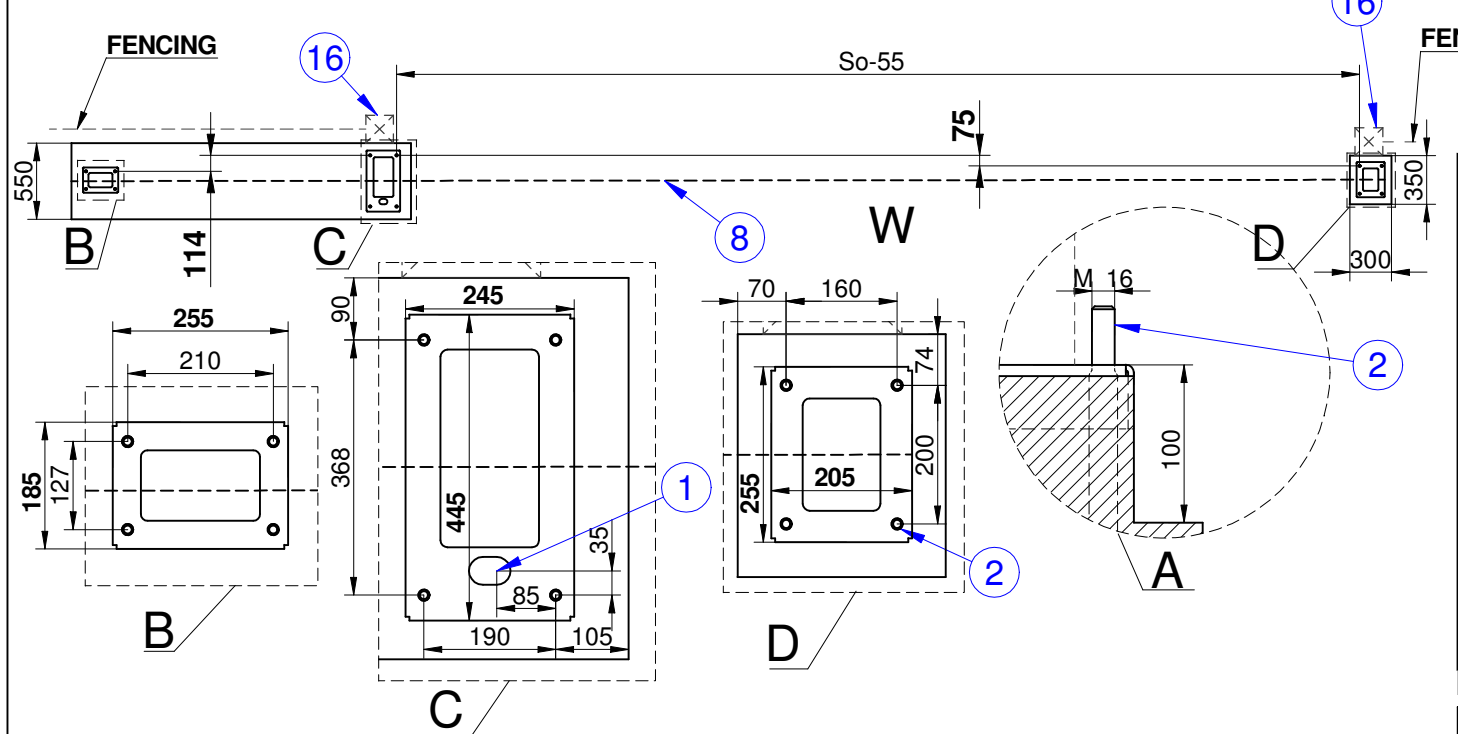


	S_0	RF
do	3500	1200
3501 - 4000	1400	
4001 - 5000	1600	
5001 - 6000	1800	
6001 - 7000	2000	



D	Distance between foundation baskets
F	Foundation length
RF	Space between the moving carriages
S_0	Drive way opening
A	Gate leaf length $A=S_0+RF+400$

1	Wire outlet point: 3x1,5mm ² ; 3x0,5mm ²
2	Anchor bolt made of ribbed bar 20-A-II with 500 mm length
3	Foundation - gravelled concrete B20 condensed
4	Below freezing zone level in accordance with standard PN-81/B-03020
5	2x0,5mm ² steering wires for photo cells in PVC or steel pipe
	Power supply: 3x1,5mm ² for 230V (1phase). Perform the installation in accordance with standard PN-IEC 60364 "electric installation in buildings"
6	3x0,5mm ² switch steering
8	Axis of the moving gate leaf
9	Dimensions in accordance with the table
10	Safe distance from constant obstacle
11	Connect wires with assembly reserve 1500 [mm]
12	4x0,5mm ² (photo cells)
13	Infrared barrier
14	Finished entry level
15	Mounting opening size
16	Theoretical fence post
Notes:	
1	Level the foundation anchor ends
2	Keep the vertical level when setting the foundation anchors
3	Do not change the section of the power and steering wires
W	Premises point view

All rights reserved

<p>FPH Wiśniewski 33-311 Wiśniewo tel. (018) 44 77 111 fax. (018) 44 77 110 http://www.wisniewski.pl</p>	Data	Nazwisko	Podpis	<p>Sliding gate PI 95</p> <p>N. Piśniewski AW.97.11347</p> <p>Data aktualizacji: 28.07.2006</p> <p>Skala: 1/1</p> <p>Forma: A4</p>	
	Projektował	1103/05	S. Ziobrowski		
	Konstruował	8/03/05	S. Ziobrowski		
	Sprawdził	03/03/05	S. Kotal		
Podziałka	Nazwa Rysunku				
Foundation of the sliding gate PI 95 - left					