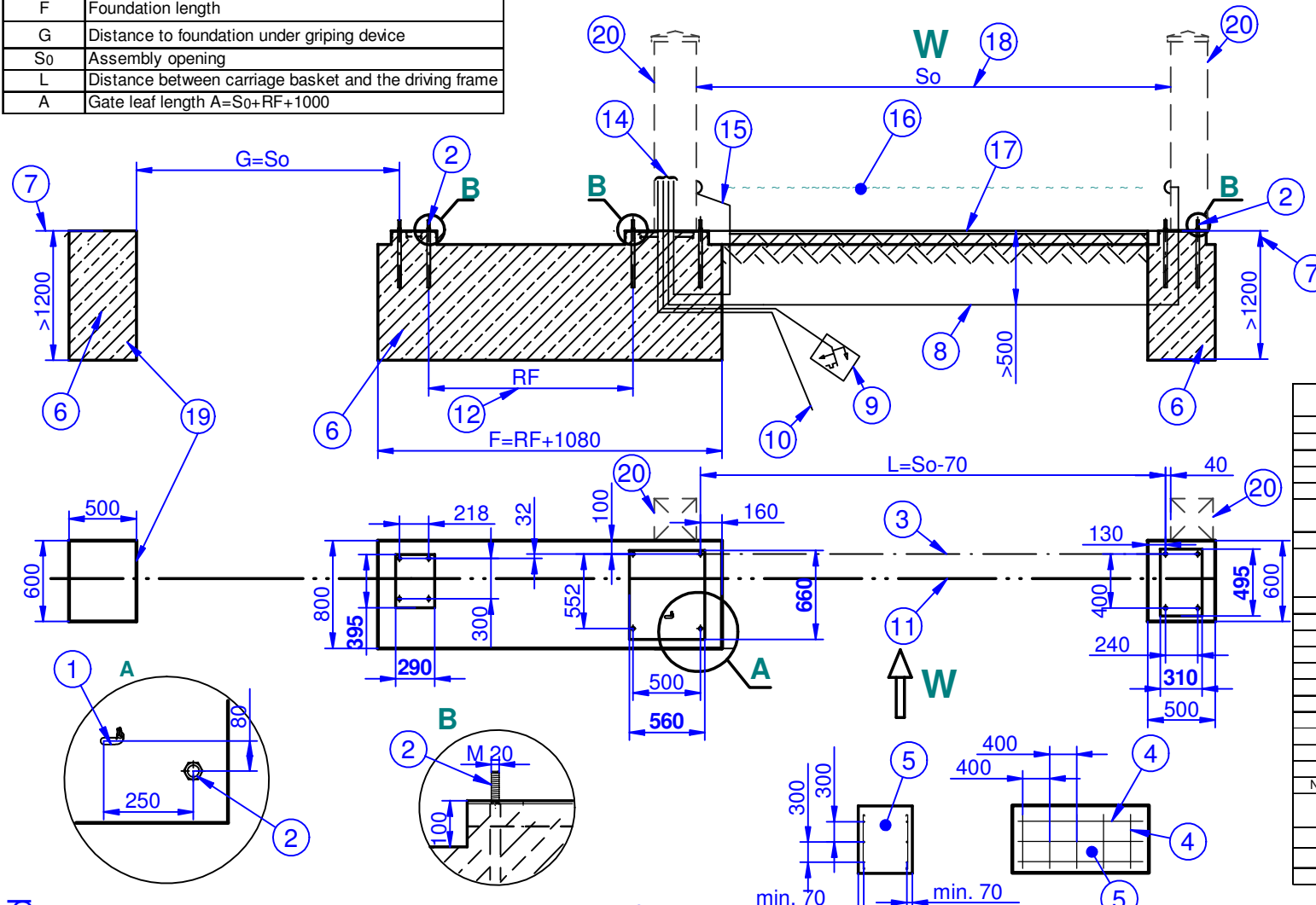


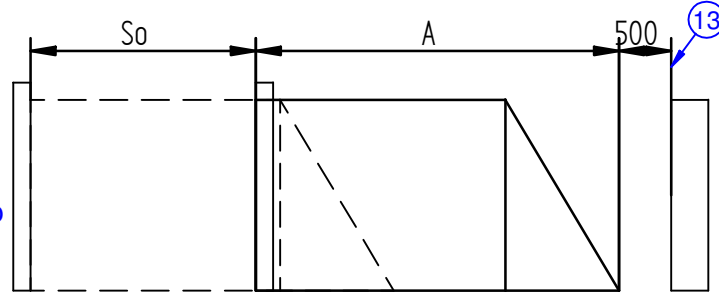
RF	Distance between driving frame basket and the carriage
F	Foundation length
G	Distance to foundation under gripping device
So	Assembly opening
L	Distance between carriage basket and the driving frame
A	Gate leaf length $A=So+RF+1000$

So	RF
4000 - 5000	1000
5001 - 6000	1200
6001 - 7000	1500
7001 - 7999	1900
8000 - 8500	2100
8501 - 9000	2300
9001 - 9500	2400
9501 - 10000	2500
10001 - 10500	2800
10501 - 11000	3000
11001 - 11500	3200
11501 - 12000	3500



1	Wire outlet point 3x1,5mm ² for 230V (1phase), 5x2,5mm ² for 400V(3phases);3x0,5mm ²
2	Anchor bolt made of ribbed bar 25-A-II with 500 mm length
3	Keep ABSOLUTE coaxial when anchor concreting
4	Reinforcement bar 8 made of A-1 class steel
5	Concrete reinforcement for F>3000
6	Foundation - gravelled concrete B20 condensed
7	Below the freezing zone level in accordance with standard PN-81/B-03020
8	2x0,5mm ² steering wires for photo cells in PVC or steel pipe
9	Power supply: 3x1,5mm ² for 230V (1phase), 5x2,5mm ² for 400V(3phases), Perform the installation in accordance with standard PN-IEC 60364 "electric installation in buildings"
10	3x0,5mm ² switch steering
11	Axis of the moving gate leaf
12	Dimensions in accordance with the table
13	Safe distance from constant obstacle
14	Connect wires with assembly reserve 1500 [mm]
15	4x0,5mm ² (photo cells)
16	Infrared barrier
17	Finished entry level
18	Mounting opening size
19	Foundation for So>10 [m] gate
20	Theoretical fence post
Notes:	1. Level the foundation anchor ends
	2. Keep ABSOLUTE coaxiality when foundation anchors concreting
	3. Keep the vertical level when setting the foundation anchors
	4. Do not change the section of the power and steering wires
W	Premises point view

All rights reserved



FPHU Wiśniowski
33-311 Wielogłowy
tel. (018) 44 77 111
fax. (018) 44 77 110
http://www.wisniowski.pl

	Data	Nazwisko	Podpis
Projektował	08/17/06	S.Ziobrowski	
Konstruował	08/17/06	S.Ziobrowski	
Sprawdził	08/17/06	G.Kołat	

Podziałka	Nazwa Rysunku	Fundament of sliding gate PI 200- left	
	Nr Rysunku	AW.11.11350	

Ważne dla	
Sliding gate PI 200	

Data aktualizacji	28.07.2006	Arkusz	1/1
Nazwa pliku:	2006-08-18	Format	A4
fundament bramy p200- Lewa_02 stopki_eng.dft			